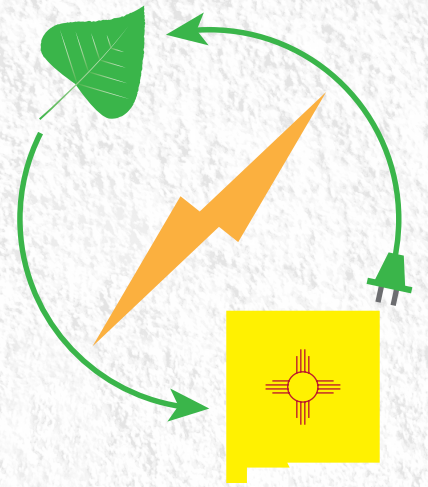


# How will **The Energy Transition Act** Engage Tribal Communities?

## What is **The Energy Transition Act**?

Passed in the 2019 New Mexico Legislative Session, **The Energy Transition Act (ETA)** will help New Mexico transition from fossil fuels towards a more **RENEWABLE** and **CLEAN ENERGY BASED ECONOMY**.



Signed into law by Governor Lujan Grisham in March 2019, *The Energy Transition Act (SB 489)* sets statewide renewable energy standards for renewable resources that will make New Mexico a leader in renewable energy.

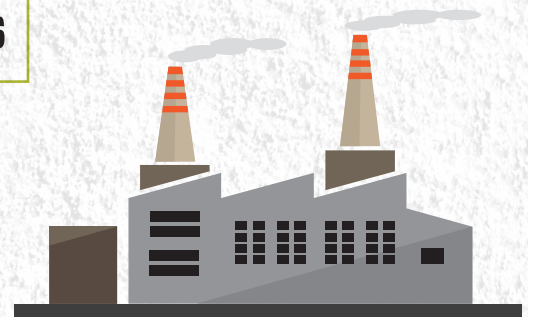
**50%** Renewable Energy by 2030  
**80%** Renewable Energy by 2040  
**100%** Renewable Energy by 2045

## The Energy Transition Act & Tribal Communities

As part of the *statewide transition* effort, the ETA creates **THREE FUNDS** across three state departments: Workforce Solutions, Economic Development, and Indian Affairs. Each department will engage affected communities for input on how the funds should be spent as well as assist with the creation of a community advisory committee.

The Community Advisory Committee **REQUIRES MEMBERSHIP** from *each Indian Nation, Pueblo, or Tribe in the affected community*, as well as four appointees representing diverse economic and cultural interests.

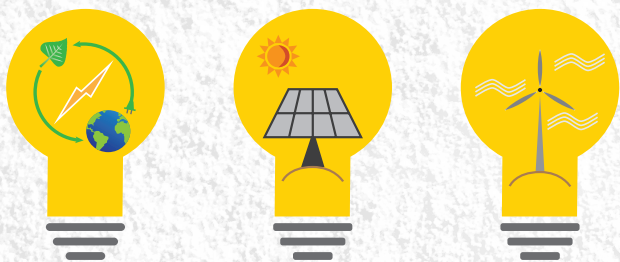
As part of their direct engagement plan, The Indian Affairs Department (IAD) plans to **VISIT EVERY CHAPTER** within the affected community area for input and recommendations on how these funds should be spent.



100 Miles  
40+ Displaced Workers

The ETA defines an **AFFECTED COMMUNITY** as "a New Mexico county located within one hundred miles of a New Mexico facility producing electricity that closes, resulting in at least forty displaced workers."

## Moving Forward With The Energy Transition Act



The ETA directs **up to 450 megawatts of replacement power** to be built in San Juan County. However, the **San Juan Generating Station** has the **potential capacity to support over 2000 MW of solar PV power** with redevelopment.

The ETA provides **RESOURCES FOR WORKFORCE RE-TRAINING** for plant and mine workers, with **PRIORITY GIVEN TO COMMUNITIES DIRECTLY AFFECTED BY THE CLOSURE OF THE MINE**. These resources are vital to Tribal communities given the high representation of Native American workers at the mine and generation station who will be directly impacted when the mine closes.

**RE** ———→  
↑ **TRAINING**

**FOR MORE INFORMATION**, please contact the Indian Affairs Department at (505) 476-1600 or by email at [Energy.Transition@state.nm.us](mailto:Energy.Transition@state.nm.us)